

WELCOME!

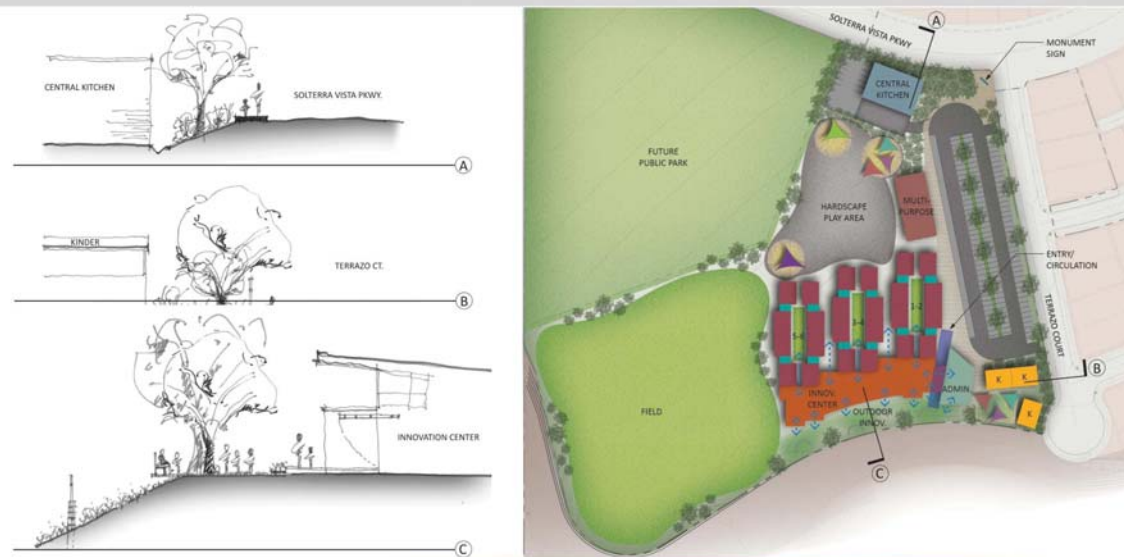


AGENDA

- DESIGN PROCESS RECAP
- REPORT BACK - PARKING & SITE ACCESS
- UPDATED BUILDING DESIGN PRESENTATION
- SCHEDULE
- OPEN Q&A

DESIGN PROCESS RECAP

SITE MASTER PLAN - OPTION #4



EAST PACIFIC HIGHLANDS RANCH SCHOOL MARCH 21, 2019 CABINET WORKSHOP #2



SITE PLAN



EAST PACIFIC HIGHLANDS RANCH SCHOOL APRIL 30, 2019 - COMMUNITY PRESENTATION #2



INTERIOR SPACE PLAN



EAST PACIFIC HIGHLANDS RANCH SCHOOL APRIL 16, 2019 - CABINET WORKSHOP #3

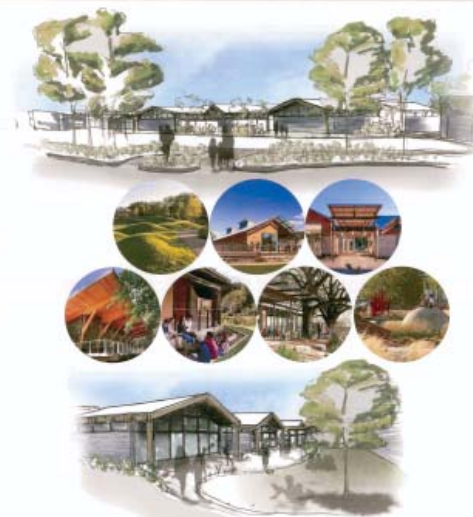


CABINET DEVELOPMENT MEETINGS

NOTICE AND WONDER

NOTICE

- Different textures of exterior
- Land form used as separation
- Wood material, terraces & fire?
- Large trees too close to building. Large rocks in playgrounds
- Lack of primary colors typical to schools
- Mounds odd for playground
- Glass facing ranges, too much heat? What type of glass?
- Class being dropped inside
- Building height may cause air birds?



WONDER

- Overall placement of windows in relation to sun?
- Continuity of design vs surrounding neighborhood? Not enough, bring in similar elements.
- Is wood real? Invasive can of wood?
- Maintenance of wood structures?
- Skylights? Solar panels?
- What is material of site facing dependent? Glass is security?
- Energy efficiency taken into consideration?
- How are outdoor elements used by kids?
- Water element?

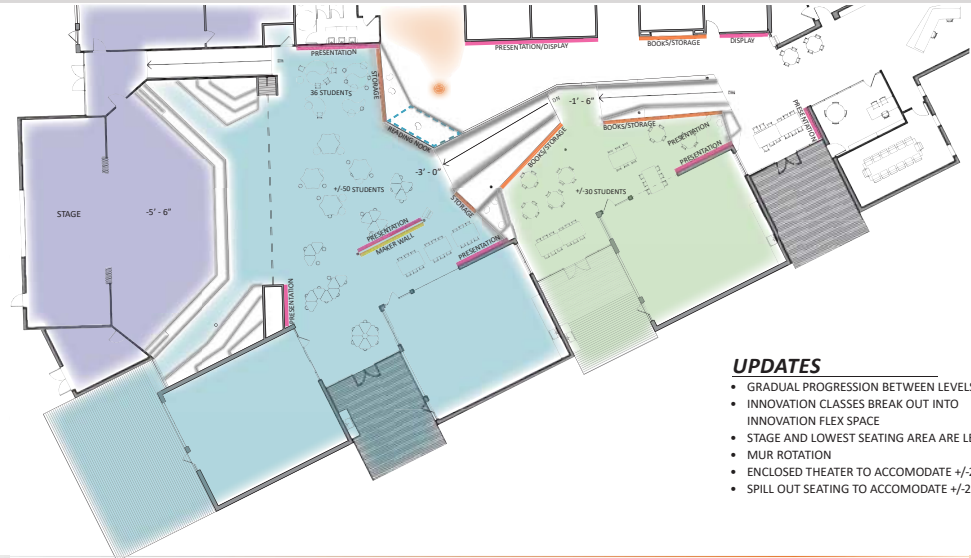
EAST PACIFIC HIGHLANDS RANCH SCHOOL APRIL 30, 2019 - COMMUNITY PRESENTATION #2



COMMUNITY MEETING #2 | 04.30.2019

DESIGN PROCESS RECAP

INNOVATION CENTER UPDATE



- UPDATES**
- GRADUAL PROGRESSION BETWEEN LEVELS
 - INNOVATION CLASSES BREAK OUT INTO INNOVATION FLEX SPACE
 - STAGE AND LOWEST SEATING AREA ARE LEVEL
 - MUR ROTATION
 - ENCLOSED THEATER TO ACCOMMODATE +/-250
 - SPILL OUT SEATING TO ACCOMMODATE +/-250

PACIFIC HIGHLANDS RANCH SCHOOL AUGUST 6, 2019 - CABINET WORKSHOP #8



DESIGN UPDATE - INNOVATION CENTER



PACIFIC HIGHLANDS RANCH SCHOOL SEPTEMBER 18, 2019 - COMMUNITY PRESENTATION #4



CLASSROOM PROTOTYPE 1



PACIFIC HIGHLANDS RANCH SCHOOL #9 OCTOBER 2, 2019 - CABINET PROGRESS MEETING #9



CABINET DEVELOPMENT MEETINGS

TRAFFIC FLOW TO RESIDENTIAL STREETS

E/W DIRECTED INGRESS TO CAMPUS
→ WHO/WHAT CONTROLS R. VS L. TURN IN?

NAME OF SCHOOL

ENTRANCE TO THE SLO → BETTER ACCESS IF LEFT TURN OUT OF SCHOOL.

— HOW TO CONTROL DRIVERS THAT TRY DANGEROUS MANEUVERS

SIBLINGS/CHOICE BTWN SCHOOLS. BOUNDARIES?

% DROPPED OFF BY CAR? HOW DO YOU PROVIDE ENOUGH SPACE FOR DROP OFF?

PARKING SPACES? ENOUGH FOR EVENTS?

— FERRATO CT. LEFT TURN OUT?

— SEPERATE PED./BICYCLE ENTRANCE?

— WILL PEOPLE TRY TO LOOP AROUND NEIGHBORHOOD?

— LEFT TURN ON TER.? PETITION CITY TO RESTRICT?

— CURRENT SITE WORK? CUT VS FULL @ SCHOOL? WATER FEATURES?

— CAFETERIA DELIVERY TIMES? GATE @ ENTRANCE?

— DOES COMMUNITY GET TO REVIEW PLANS PRIOR TO CONSTRUCTION? ANOTHER MEETING? REVIEW DTS?

— COMMUNITY NOTIFIED IF ANY CHANGES ARE MADE THAT IMPACT THE COMMUNITY/NEIGHBORHOOD?

— COMMUNICATION CHANNELS TO COMMUNITY FOR UPDATES

BOUNDARY DEFINITION

— PEDESTRIAN/BICYCLE CROSSING @ SINGLE PT. - CONTROL?

— ANTICIPATE ANOTHER CHANGE TO ENTRY?

— BACK UP ON CORNER VALLEY RD.? STAGGER START TIMES @ SUMMS?

PACIFIC HIGHLANDS RANCH SCHOOL OCTOBER 30, 2019 - COMMUNITY PRESENTATION #5



COMMUNITY MEETING #4 | 09.18.2019

CIRCULATION & PARKING DESIGN



---> Vehicular Entry/Exit Option #2

TRAFFIC ACCESS PLAN - Pros & Cons

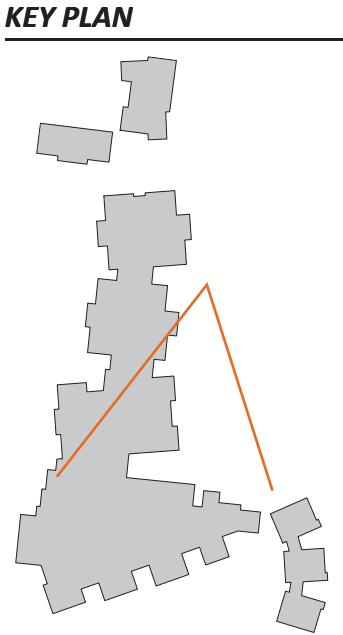
ISSUE	OPTION CONSIDERED (TERRAZO CT ACCESS)	SELECTED DESIGN (SOLTERRA VISTA PKWY ACCESS)
VEHICLE QUEUES DURING DROP-OFF/PICK-UP	Better queuing off-street, less traffic delays on Solterra	Less internal queuing, slower traffic on Solterra Vista
POTENTIAL FOR TRAFFIC	Conflicts will be at Solterra Vista at Terrazo	New point for conflicts close to existing intersection
ACCESS ROUTE	Terrazo Court 29 feet wide with residential parking on the east side of the street	Access on wider street, more direct and efficient
NEIGHBORHOOD TRAFFIC INTRUSION	Traffic will use local residential streets, Terrazo is a bit narrow to handle school traffic	Traffic will be mostly on a collector street
PEDESTRIAN SAFETY / INTERSECTION CONTROL	Crossing guard / intersection control needed at Solterra Vista-Terrazo Court intersection and Terrazo Court - Kenmar Way intersection	Crossing guard / intersection control needed at Solterra Vista only.
KINDER PICK-UP/DROP-OFF	Access to Kinder drop-off/pick-up obstructed by site entry queue on Terrazo Court	Access to temporary parking for Kinder drop-off/pick-up available unobstructed on Terrazo Court

Pro

DESIGN UPDATE - SITE PLAN



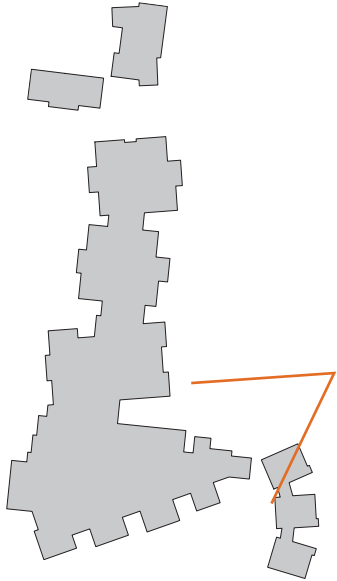
DESIGN UPDATE - CLASSROOM BUILDING EAST



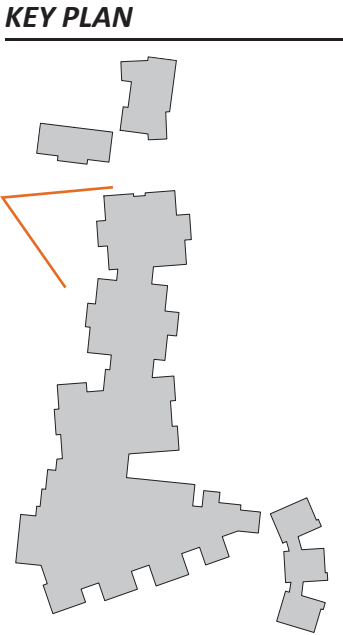
DESIGN UPDATE - MAIN ENTRY & KINDERGARTEN



KEY PLAN



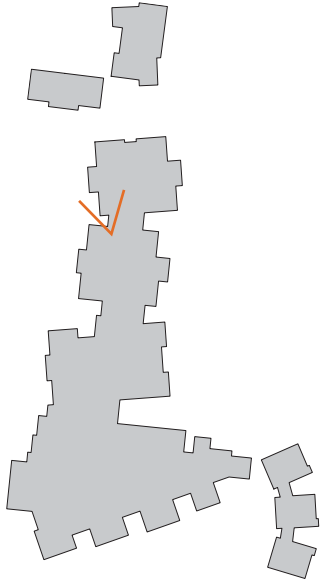
DESIGN UPDATE - CLASSROOM BUILDING WEST



DESIGN UPDATE - CLASSROOM BUILDING INTERIOR



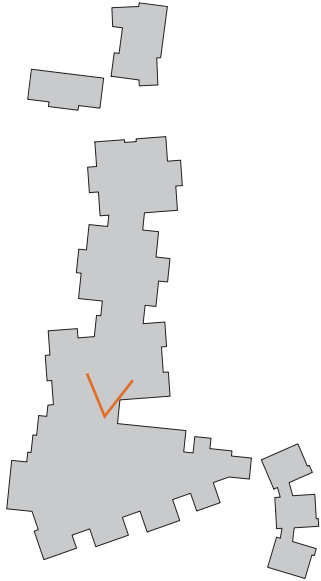
KEY PLAN



DESIGN UPDATE - CLASSROOM BUILDING INTERIOR



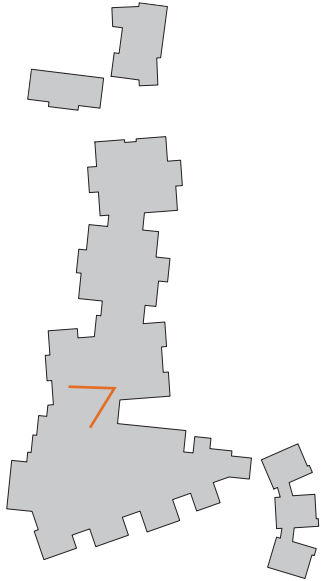
KEY PLAN



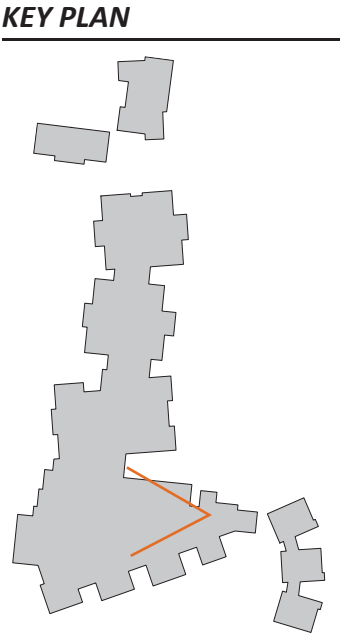
DESIGN UPDATE - CLASSROOM BUILDING INTERIOR



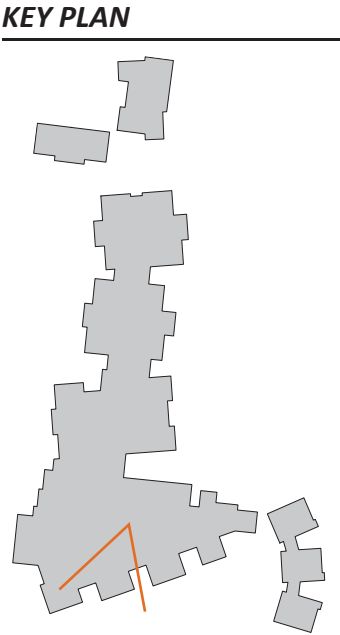
KEY PLAN



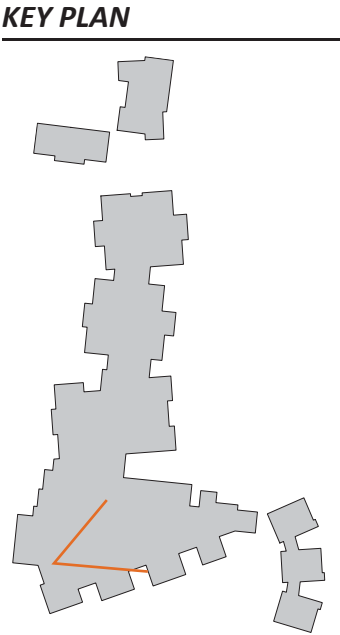
DESIGN UPDATE - INNOVATION CENTER



DESIGN UPDATE - INNOVATION CENTER



DESIGN UPDATE - INNOVATION CENTER

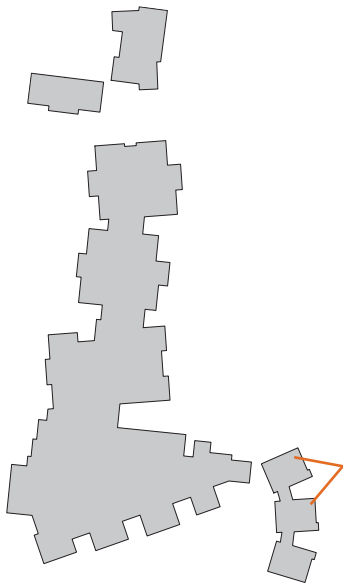


PACIFIC HIGHLANDS RANCH SCHOOL OCTOBER 30, 2019 - COMMUNITY PRESENTATION #5

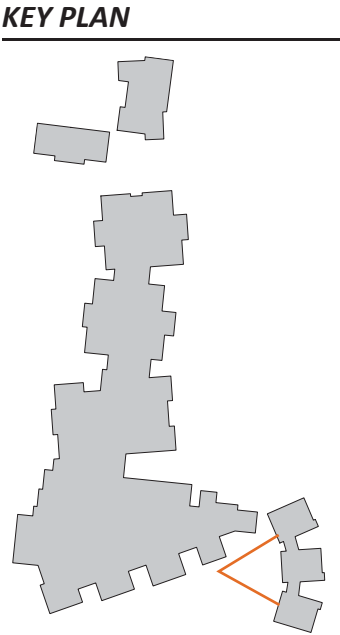
DESIGN UPDATE - KINDERGARTEN INTERIOR



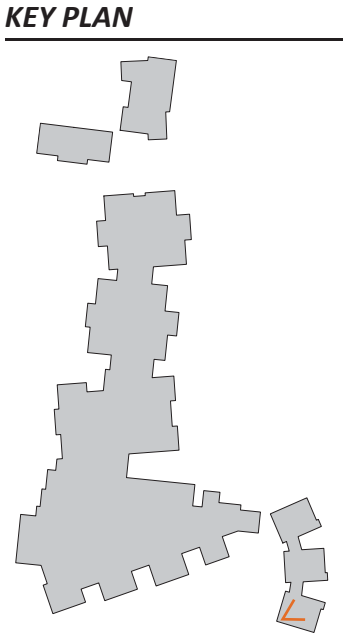
KEY PLAN



DESIGN UPDATE - KINDERGARTEN INTERIOR



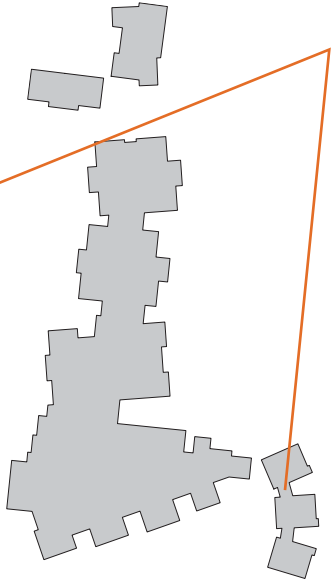
DESIGN UPDATE - KINDERGARTEN INTERIOR



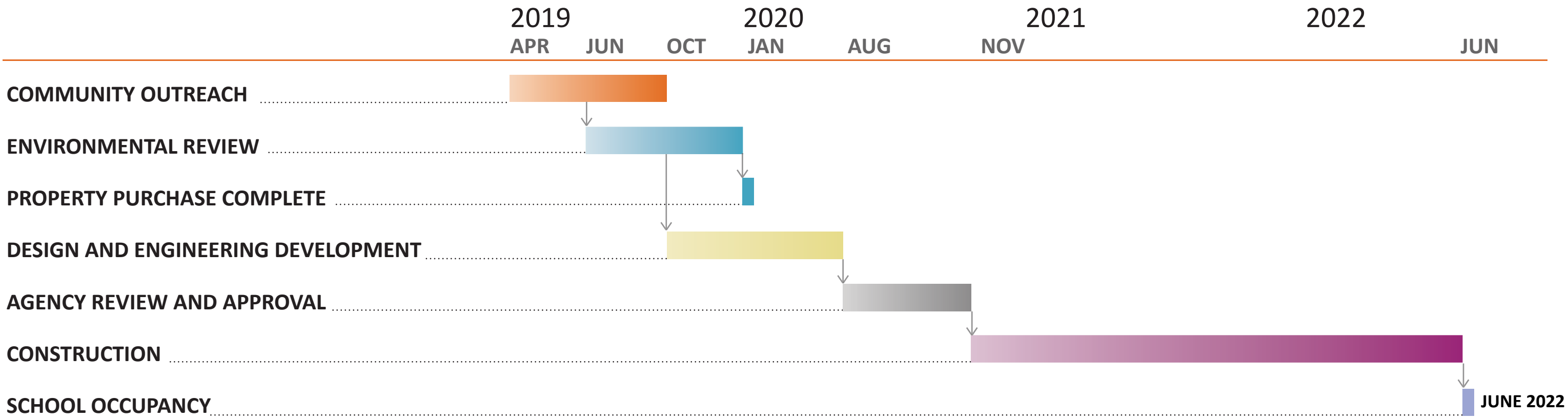
DESIGN UPDATE - OVERALL CAMPUS VIEW



KEY PLAN



PROJECT SCHEDULE



NEXT STEPS

- **CONSTRUCTION TEAM**
- **SITE ACQUISITION**
- **PROGRESS UPDATES**
- **OPEN Q&A**

OPEN Q&A



THANK YOU!



forging a path for tomorrow's innovative, global thinkers